

## Category 1

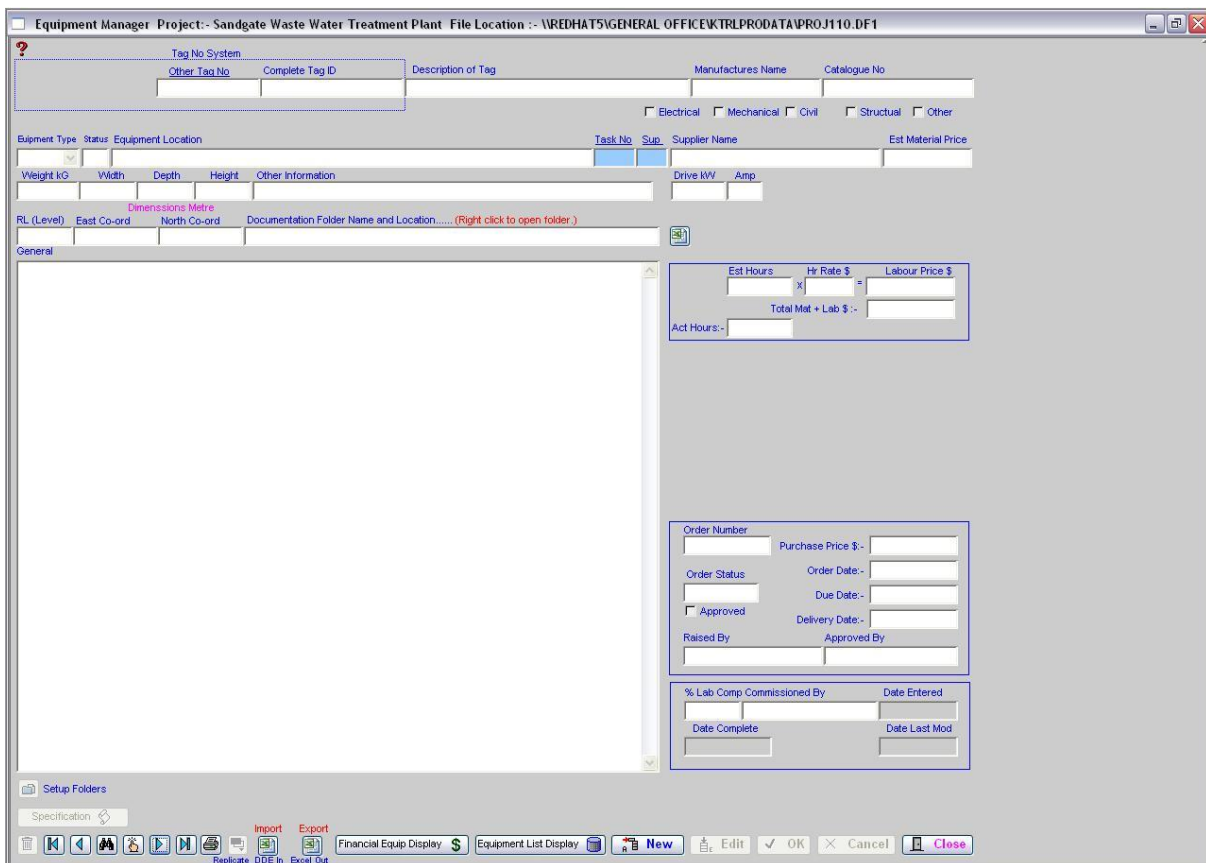
### 1.12 Equipment Manager



#### Function of the window

The window is the central data file for the Kontrol Pro and collects the main data for fees of an object that to be used in this project.

The 'Equipment Manager' collects information on equipment such as Motors, Pump Sets and Instrumentation Devices to have like objects identified. These like objects are then given a unique number. This information is built on assigning details such as Parent, Weight, Location, Dimensions, Kilowatts, Catalogues and other information.



This information can be added or amended when required and notes and general comments can also be included to provide up to date information. All other file pivot around this, for example, if an object has to be purchased then the information has captured. If the object is a pump then the pump has a size and other attributes to control with and manage in other parts of program, the cable required supplying the pump and also pipes are necessary. Kontrol pro also can manage the drawings the PLC input / Output Logic (I.O). An object is defined as being a piece of equipment located in building or on a part of a plant and it reflect to a TAG Number.



This setup's a equipment information folder adjacent to the data file. The folder is as follows Project1xx\Information\TagNo-XXXX . If the the tag No is changed an attempt to change the folder is made however if folder is in use by others problems can occur.



**Replicate**

This duplicates the contents of the existing current record, by creating a new one. However the Tag Number must be a unique number before the record is accepted into the data base. The function of this button is to save data entry. Click on 'Replicate' to copy the item, then make amendments as required.



**Excel Out**

The entire Equipment List can be automatically generated into an Excel Spreadsheet. Click on the 'Excel Out' button and the list will be generated.

**DDE In**

Information stored on another document can also be imported into the Equipment List. Click on the 'DDE In' button and the system will request a document location. Find the location of the document and the system will import the information.

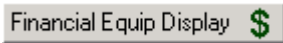
<b>Equipment Schedule :-</b>								Chris Hughes
Parent	Equipmet ID	Complete Number	Description	Manufacturer Name	Catalogue Number	Displ	Status	Loc:
		----	POLYMER RECEIVER-1 AGITATOR	Power Up		E YES	C	Pow
		----	POLYMER RECEIVER-2 AGITATOR				C	
		AG-103	REWORK TANK AGITATOR					
		AG-151	DF5 TANK-1 AGITATOR					
		AG-152	DF5 TANK-2 AGITATOR				C	
		AG-153	DF5 TANK-3 AGITATOR					
		AG-154	DF10 TANK-1 AGITATOR					
		AG-155	DF10 TANK-1 AGITATOR					
		AG-156	DF20 TANK-1 AGITATOR					

The system has a DDE (Dynamic Data Exchange) function. This means information can be imported into the current section of the Equipment List. You must have an Microsoft Excel spreadsheet open and the Excel file you want to import, and the columns lined up in the following order:-

Parent, Equipment ID, Complete Number, Description, Manufacturer Name, etc.

Spreadsheets can be used for evaluation or to access information received in spreadsheet format. The information can be organised into an area to act as a gateway for exchange. When this feature is used, the information is entered into the currently displayed section. The procedure is designed to obtain information from the 3<sup>rd</sup> line downward in a spreadsheet until a blank description (line) is found, then it will terminate.

**Note:** Numeric fields in Excel must be displayed without "\$" signs, as the system see these as Alpha fields and the information is not imported.



This button opens another window and allows the user to build a selected list of equipment, by using a drop down list. (See below for further information 1.12.1)



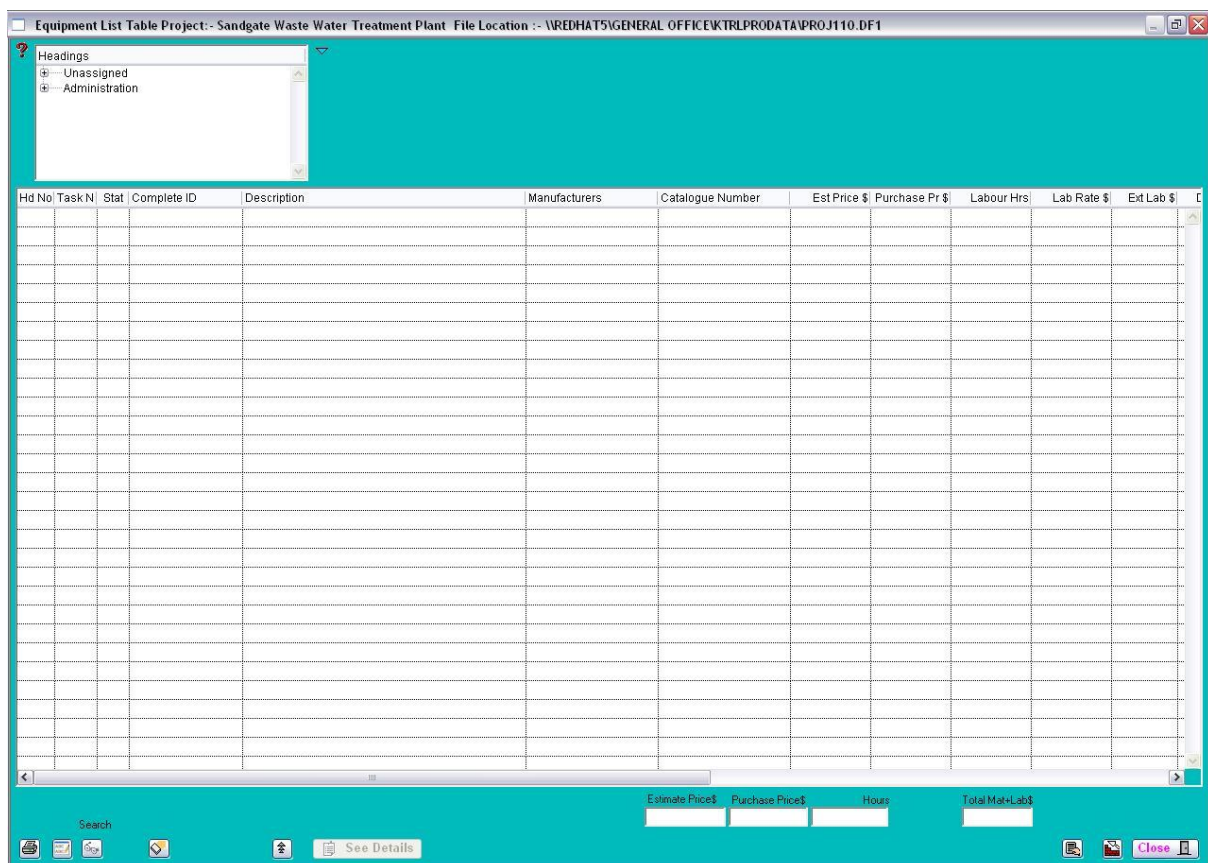
This button opens another window and allows the user to build a selected list of equipment, by using a drop down list. (See below for further information 1.12.2)



This button opens a window showing more related details on the current record / piece of equipment. (See below for further information 1.12.4)

### 1.12.1 Financial Equip Display

The following screen appears with all the information of each item.



To make an amendment or to update an item in the Equipment List, click on the item to highlight the selected line and then click on the 'Close' button. You will return to the Equipment Manager screen and the item will be listed in the fields.



This replaces the existing part of a word, or word in the Equipment Manager description to a new word



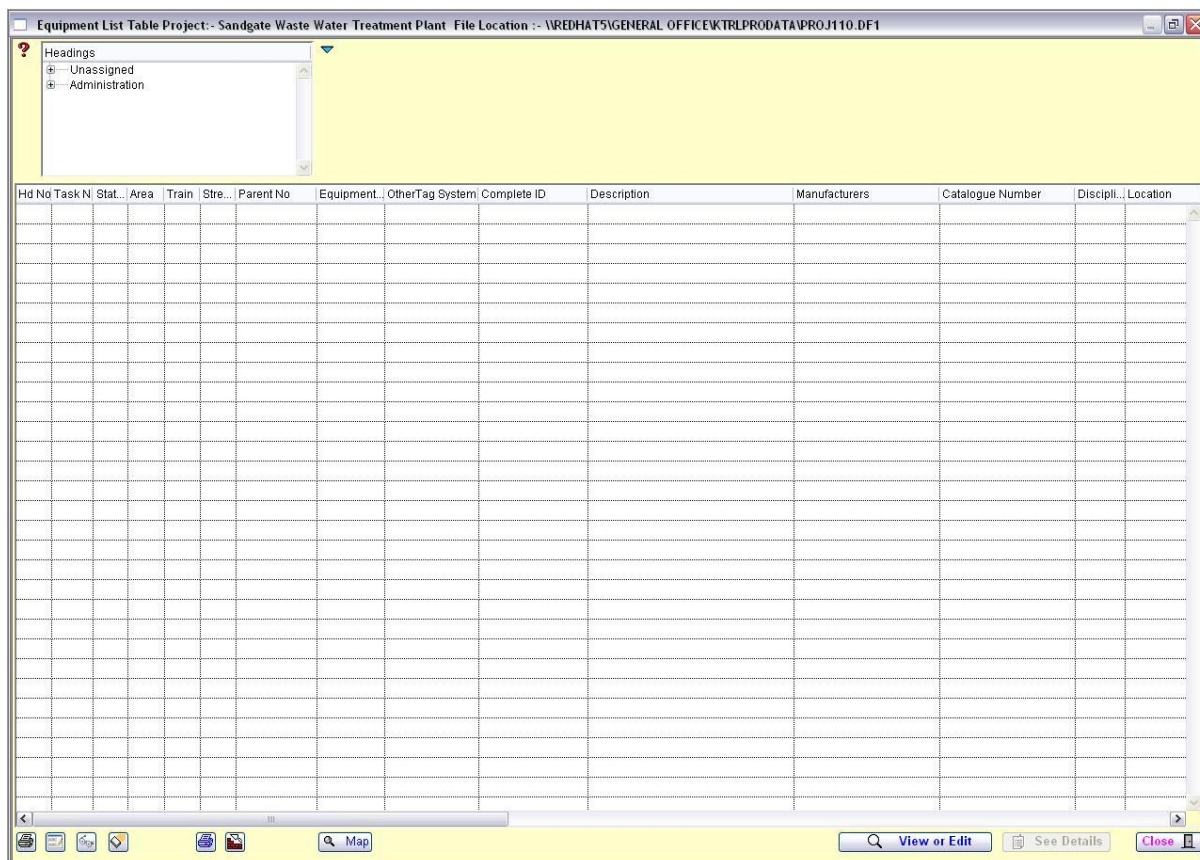
Search Description based on words contained. A right click will search on the combined tag number looking for number identifiers.



Deletes selected lines from the list. This does not delete the information, it allows you to work with a smaller list.

### 1.12.2 Equipment List Display

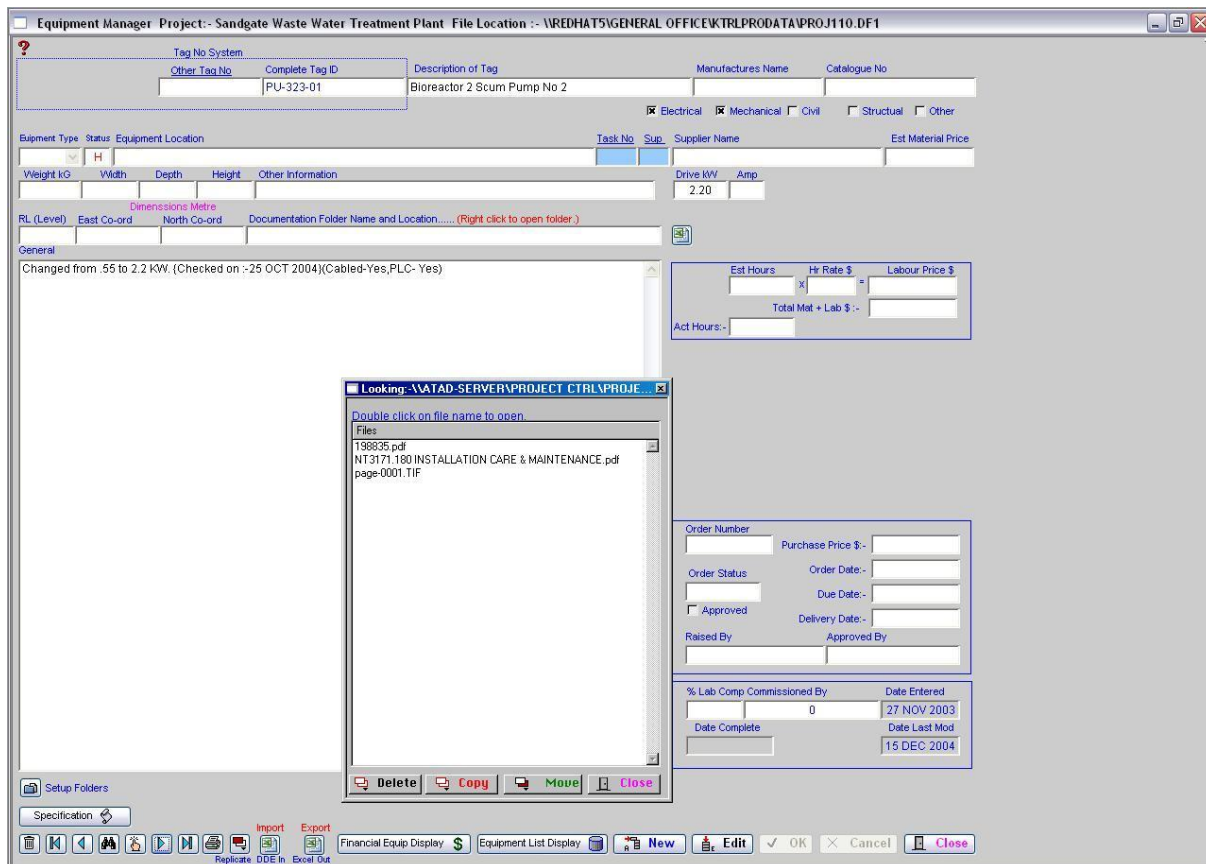
This displays as default the current records and a selection of records in the equipment list data file, when a record is clicked on the line is found and displays in single record layout. The list headers will sort the records when clicked on.



### 1.12.3 Document Folder Location

In Equipment Manager you can set up a 'Documentation Folder, Name and Location' for each item. Information pertaining to the item in the Equipment List might be for the care and installation or setup. Other information could include; PDF Instructions, Excel Spreadsheets, Diagrams, Drawings and Graphs.

To establish an information folder, click on the 'Setup folders' button located to the right of the 'Documentation Folder, Name and Location' field. The folder path will be named the same as the Project Name (refer to Module 2 – Change Default Project). However, it will have included an Information Folder and the Equipment Item Tag Number.



To access the information in the folder, right click on the "Documentation Folder, Name and Location" field. The 'Document' screen will open and to access information, double click on the folder name.

If the information / instructions is required on several items the same ensure you use the same path location i.e. 6 RAS pumps instructions should only be included in the information folder once and the path location should be directed to the one location.

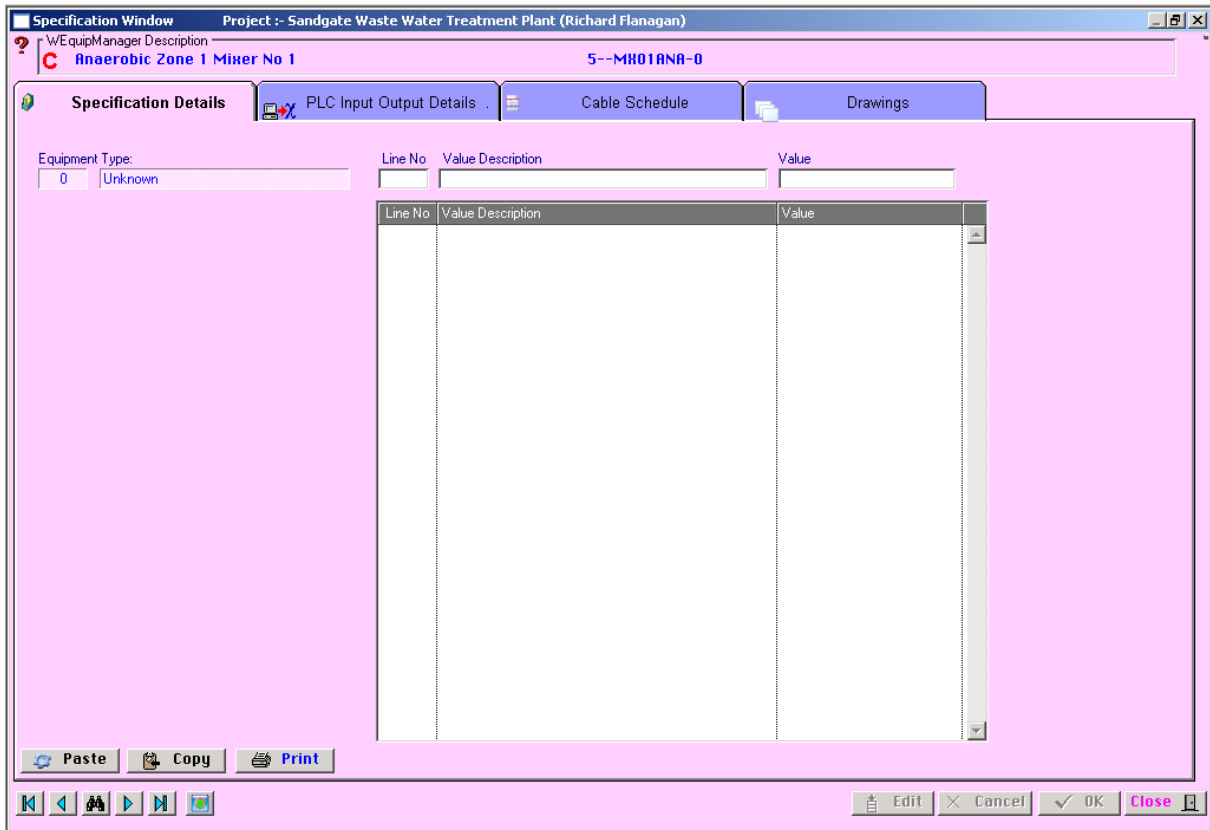
## 1.12.4 Specification Details window

### Specifications

To build on the details on an item in the 'Equipment Manager', click on the 'Specification' button. Additional information can be entered into each of the following areas providing a more detailed explanation of the item listed.

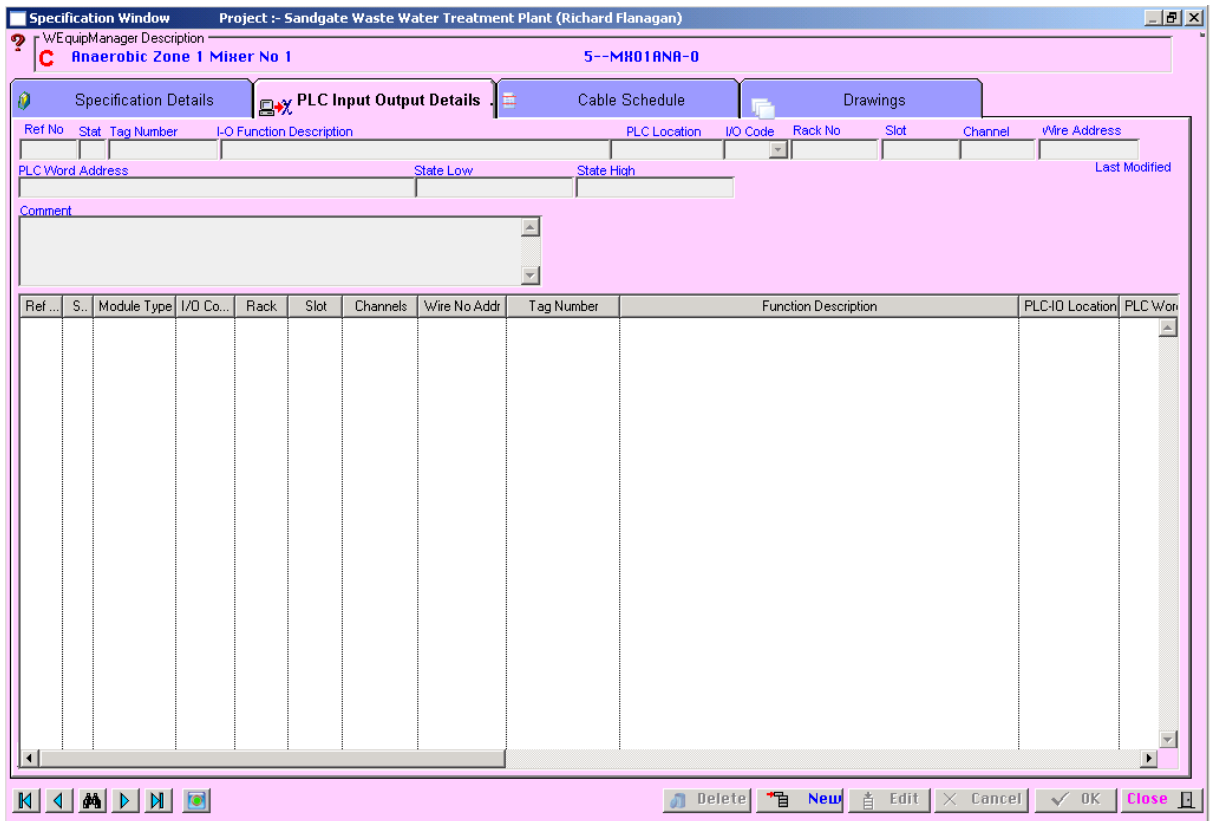
- Specification Details
- PLC In/Output Details
- Cable Schedule
- Drawings

The 'Specification' window provides more detailed information to be entered on each item listed in the 'Equipment Manager'.



This button Transfers to PLC Input Output File

### 1.12.5 PLC In/Output Details Window



### 1.12.6 Cable Schedule Window

Cable No	C.C.	Cable Origin	Device Origin	Destination	Device Destination	Cores	mm2	Type of Cable	Voltage	Est Lgth	Act L
TX-001-02...	204	Transformer 1500kVA-Blower Building	TX-001-02	Motor Ctrl Center - Blowers	MCC-001-01	1C	500	PVC PVC	6/1kV	13	0
TX-001-02...	204	Transformer 1500kVA-Blower Building	TX-001-02	Motor Ctrl Center - Blowers	MCC-001-01	1C	500	PVC PVC	6/1kV	13	0
TX-001-02...	204	Transformer 1500kVA-Blower Building	TX-001-02	Motor Ctrl Center - Blowers	MCC-001-01	1C	500	PVC PVC	6/1kV	13	0
TX-001-02...	204	Transformer 1500kVA-Blower Building	TX-001-02	Motor Ctrl Center - Blowers	MCC-001-01	1C	500	PVC PVC	6/1kV	13	0
TX-001-02...	204	Transformer 1500kVA-Blower Building	TX-001-02	Motor Ctrl Center - Blowers	MCC-001-01	1C	120	PVC PVC	6/1kV	13	0
TX-001-02...	204	Transformer 1500kVA-Blower Building	TX-001-02	Motor Ctrl Center - Blowers	MCC-001-01	1C	500	PVC PVC	6/1kV	13	0
TX-001-02...	204	Transformer 1500kVA-Blower Building	TX-001-02	Motor Ctrl Center - Blowers	MCC-001-01	1C	500	PVC PVC	6/1kV	13	0
TX-001-02...	204	Transformer 1500kVA-Blower Building	TX-001-02	Motor Ctrl Center - Blowers	MCC-001-01	1C	500	PVC PVC	6/1kV	13	0
TX-001-02...	204	Transformer 1500kVA-Blower Building	TX-001-02	Motor Ctrl Center - Blowers	MCC-001-01	1C	500	PVC PVC	6/1kV	13	0
TX-001-02...	204	Transformer 1500kVA-Blower Building	TX-001-02	Motor Ctrl Center - Blowers	MCC-001-01	1C	500	PVC PVC	6/1kV	13	0
TX-001-02...	204	Transformer 1500kVA-Blower Building	TX-001-02	Motor Ctrl Center - Blowers	MCC-001-01	1C	500	PVC PVC	6/1kV	13	0
TX-001-02...	204	Transformer 1500kVA-Blower Building	TX-001-02	Motor Ctrl Center - Blowers	MCC-001-01	1C	500	PVC PVC	6/1kV	13	0
TX-001-02...	204	Transformer 1500kVA-Blower Building	TX-001-02	Motor Ctrl Center - Blowers	MCC-001-01	1C	500	PVC PVC	6/1kV	13	0
TX-001-02...	204	Transformer 1500kVA-Blower Building	TX-001-02	Motor Ctrl Center - Blowers	MCC-001-01	1C	500	PVC PVC	6/1kV	13	0
TX-001-02...	204	Transformer 1500kVA-Blower Building	TX-001-02	Motor Ctrl Center - Blowers	MCC-001-01	1C	500	PVC PVC	6/1kV	13	0
TX-001-02...	204	Transformer 1500kVA-Blower Building	TX-001-02	Motor Ctrl Center - Blowers	MCC-001-01	1C	500	PVC PVC	6/1kV	13	0
TX-001-02...	204	Transformer 1500kVA-Blower Building	TX-001-02	Motor Ctrl Center - Blowers	MCC-001-01	1C	500	PVC PVC	6/1kV	13	0
TX-001-02...	204	Transformer 1500kVA-Blower Building	TX-001-02	Motor Ctrl Center - Blowers	MCC-001-01	1C	500	PVC PVC	6/1kV	13	0
TX-001-02...	204	Transformer 1500kVA-Blower Building	TX-001-02	Motor Ctrl Center - Blowers	MCC-001-01	1C	500	PVC PVC	6/1kV	13	0
TX-001-02...	204	Transformer 1500kVA-Blower Building	TX-001-02	Motor Ctrl Center - Blowers	MCC-001-01	1C	500	PVC PVC	6/1kV	13	0
TX-001-02...	204	Transformer 1500kVA-Blower Building	TX-001-02	Motor Ctrl Center - Blowers	MCC-001-01	1C	500	PVC PVC	6/1kV	13	0
TX-001-02...	204	Transformer 1500kVA-Blower Building	TX-001-02	Motor Ctrl Center - Blowers	MCC-001-01	1C	500	PVC PVC	6/1kV	13	0
EPE-002	102	Transformer 1500kVA-Blower Building	TX-001-02	Earth Ring Around Transformer	MCC-001-01	1C	120	PVC	6/1kV	30	0
HV-P11	104	Ring Main Unit No1 - Blowers MCC Feeder 1	RMU-002-1	Transformer 1500kVA-Blower Buildi...	TX-001-02	3C	35	XLPE HD SCR	6.3/1...	2	0

### 1.12.7 Drawings Window

Drawing Number	Drawing Title	Rev.
----------------	---------------	------

Add Drawings